

1, Your Phone.....	1
<i>Overview.....</i>	<i>2</i>
<i>Host System Requirement.....</i>	<i>2</i>
<i>Specifications.....</i>	<i>2</i>
<i>Package Contents.....</i>	<i>3</i>
2, Getting Started.....	4
<i>Step 1: Connect the USB Phone to PC.....</i>	<i>4</i>
<i>Step 2: Install the Latest Skype™.....</i>	<i>4</i>
<i>Step 3: Install the USB Phone Driver: CalMe2.....</i>	<i>4</i>
3, Update the USB Phone Driver.....	5
4, Key Features and General Functions.....	6
Key Futures.....	6
General Functions.....	8
1. Call Skype user from Skype Contacts.....	8
2. Call Skype user by Speed-Dial function.....	8
3. Call to regular telephon.....	9
4. Select your favorite melody.....	10
5. Adjust the Volume.....	10
6. Set LCD Display.....	11
5, Trouble Shooting.....	12

Your Phone

2 Overview

USB-M05 is a high quality USB hand phone with LCD and 4-polyphonic ring tones. The fully functional keypad and the LCD screen enable you to make/receive Skype calls without using mouse and keyboard. Just plug it into your PC or laptop, and then you can enjoy the full features of Skype™.

Features:

- ü Monochrome 128*64 pixel LCD. Supports all kinds of languages.
- ü Skype Contact List, Call List and time display on LCD screen
- ü 12 classical 4-polyphonic ring tones catering to different tastes.
- ü Rings loudly on an incoming call.
- ü Fully functional keypad and LCD screen enables you to make/receive calls without using keyboard and mouse.
- ü Full-duplex communication with crystal clear sound.
- ü USB interface PnP. No external power/sound card needed.
- ü Support Skype, MSN, ICQ, QQ and most of on-line chat software.

2 Host System Requirements


- ü Microsoft Windows 2000/XP.
- ü Pentium 400MHz above processor/128MB RAM/16MB free hard disk capacity.
- ü One USB port available.
- ü Internet connection (ADSL, Cable Modem, Dial-Up, Wireless LAN).

2 Specifications

Weight	110g	
Dimensions	44mm*140mm*18mm	
USB Port	Mini USB A-type	
LCD	Size	30mm*14mm
	Pixel	128*64
Voltage	4~5.25 V	
Operating Humidity	5~95%RH	
Operating Temperature	0~40°C	

2 Package Contents

When you receive your USB phone **USB-M05**, please check to make sure that your package contains the following items:

	One USB handset
	One installation CD
	One mini USB cable
	One user manual*

Note:

This user manual is written for the USB phone driver **CaIMe2 Version 1.1.0.5**

Getting Started

Step 1: Connect the USB Phone to PC

The hardware installation is very simple. All you need to do is to connect the USB phone to the USB port on your PC with the mini USB cable. The red Status Power LED on the phone will be on.

Step 2: Install the Latest Skype™

The USB phone must work with Skype™ Rev. 1.3.0.66 or above. If your Skype™ is outdated, please download the latest version of Skype™ software from its official website www.skype.com.

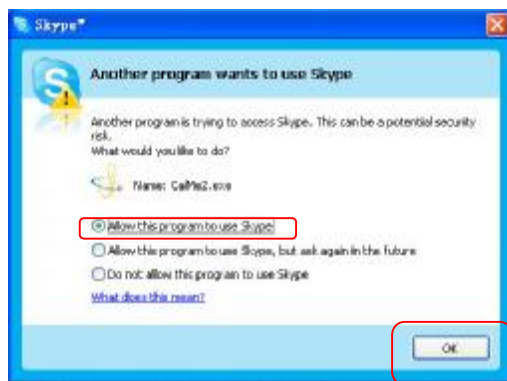
However, how to use Skype™ is not included in this manual. For more detailed information about Skype™, please visit its official website www.skype.com.

Step 3: Install the USB Phone Driver: CalMe2

You can insert the supplied installation CD into your PC or download the latest version of driver “CalMe2” from <http://www.linksz.net>




After the installation, please RESTART WINDOWS.

If CallMe2 is run for the first time, Skype™ will pop up the following window. Please select “*Allow this program to use Skype*” as the illustration shown below:



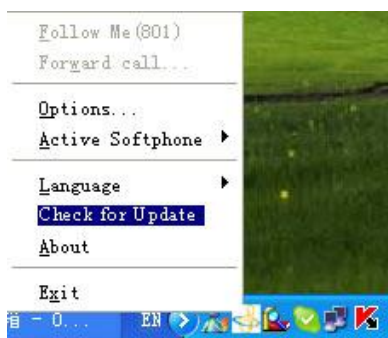
Now you are ready to make/receive calls with the USB phone.


The indications of tray icon for USB phone driver

-  The USB Phone works normally.
-  The USB phone fails to communicate with Skype™. (Please refer to "Trouble Shooting in this manual")
-  The USB phone fails to communicate with your computer. (Please refer to "Trouble Shooting" in this manual.)

Update the USB Phone Driver

As we constantly innovate our products, it can happen that we have latest versions of driver than what included on the installation CD. If you want to check the latest version of driver, please follow the guideline below:



Right click the icon  and choose "Check for Update".

Then, the driver CalMe2 will update automatically.

Key Features and General Functions

2 Key Features




Notes:

LED Status:	Flash red light when there is an incoming call or the call is in Mute status
	Keep red light during a call


* If the display contents on USB PHONE LCD are different from SKYPE, PLS do your operation according to the LCD contents.

* When SKYPE is minimizing status, press any key except OFF, then SKYPE will pop up automatically.


1. Miss :

Press  to check MissCall record list on LCD, and then press UP/DOWN to choose missed calls.


2. Income :

Press  to check IncomeCall record list on LCD, and then press UP/DOWN to choose incoming calls.

3. Voice :

Press  to check VoiceMail record list on LCD, and then press UP/DOWN to choose voicemails.


4. Redial :

Press  to check OutgoMail record list on LCD, and then press UP/DOWN to choose outgoing calls.


5. Clear :

If you have dialled numbers, press  to delete numbers one by one.


6. SKYPE :


Press  to switch SKYPE's main windows "Contacts, Dial or History (Call List)"

7. SEND :

Press  to dial out or pick up calls

8. OFF :

When you are calling on the phone, press  to hang up the call

When you are not calling on the phone, press  to minimize SKYPE

9. UP/DOWN :

Scroll UP/DOWN to view and select the contents on USB PHONE LCD or SKYPE windows

10. VOL+/VOL- :

Press VOL+/VOL- to adjust sound volume during the conversation

11. MUTE :

Press  to turn off the microphone during the conversation

2 General Functions

1.Call Skype user from Skype Contacts

Use “Up/Down” on your phone to scroll up/down and select the contact that you wants to call,

and then press  to call Skype user

2.Call Skype user by Speed-Dial function

For example:

Add "Ross" to Contacts


Assign Speed-Dial to edit a number for “Ross”, example "25"






Input number "25" on USB Phone, and this number will be shown on USB PHONE LCD & Skype, then press **Receive/Dial out** to call out.


3.Call to regular telephone

Press "00"+"country number "+" phone number", then press  to dial out.

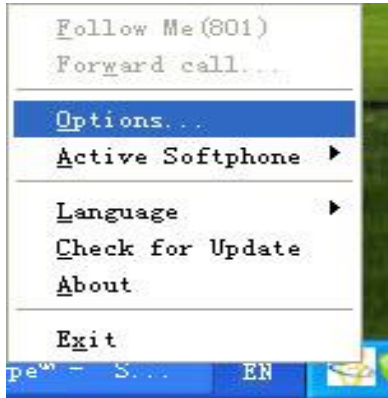
Example: call someone in Beijing, China, please press 00861012345678, and then press 


0086 or +86	10	12345678
-----	-----	-----
country code	city code	destination number

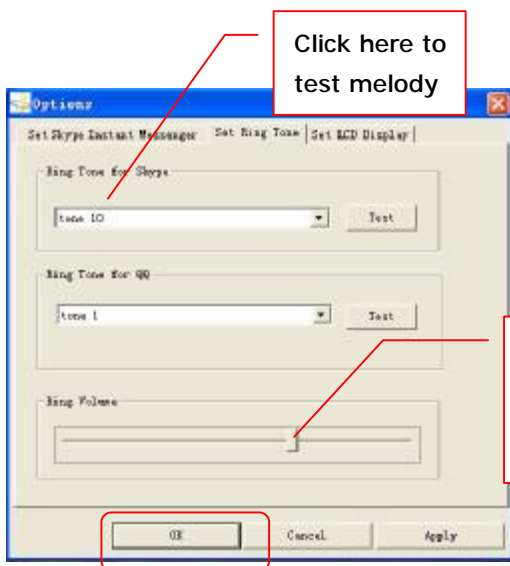
Note: If you want to use this function, you should buy SkypeOut Credit from www.skype.com first.

If you input a wrong number, please press  to clear it.

4. Select your favorite melody



To select your favorite melody, please right click the tray icon  and choose “Options”.



Then, you will see this window in which you can select or test melodies, as well as adjust the volume of melody.

Move the indicator bar to adjust the volume for ringer.


5. Adjust the Volume

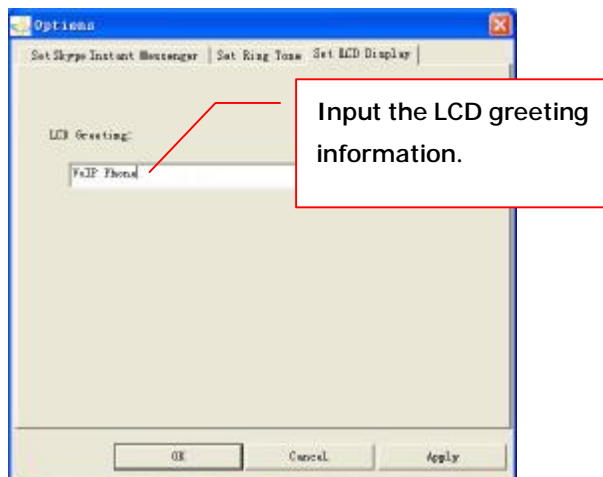


Press “VOL+/VOL-” to turn up/down the volume for the USB phone during a call.

6.Set LCD Display




To set your LCD display on standby mode, please right click the tray icon  and choose “Options...”




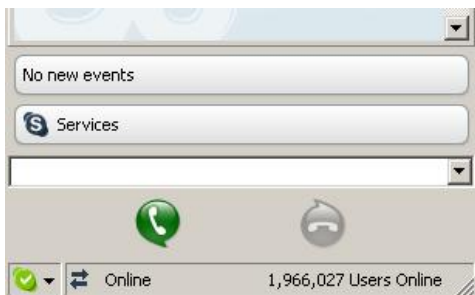
Trouble Shooting

For latest information about the Trouble Shooting and the FAQ, please visit <http://www.linksz.net>

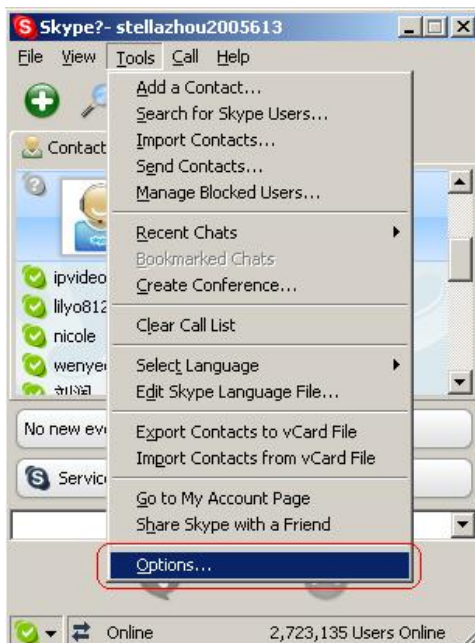
Q1: Why did I see the icon  rather than  in the taskbar? What's wrong with the driver software?

▶ If you see the icon ,

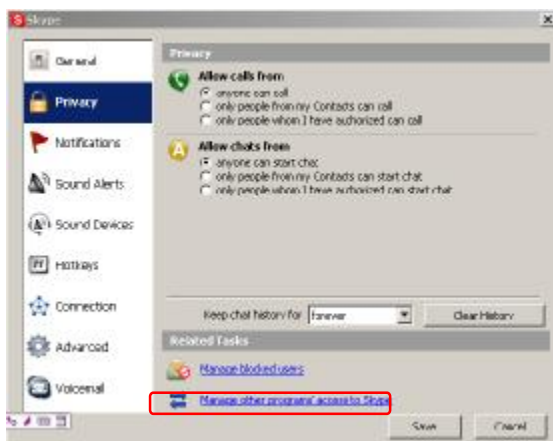
- 1) please check whether Skype™ is running at the moment. If not so, please run Skype™;
- 2) please check whether you can see the icon  in the Skype™ Windows if Skype™ is running.



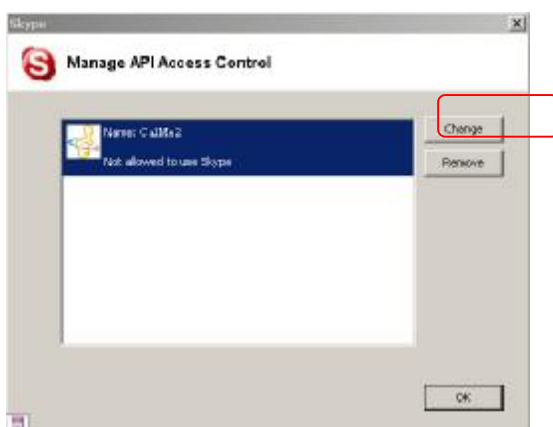
But if you cannot see this icon, please follow the steps:



Step1: “Tools” —“Options”.



Step 2: “Privacy”--“Related Task: Manage other program’s access to Skype”.




Step 3: Choose “Change”



Step 4: Choose “allow this program to use Skype”

Q2: After turning on the computer, I see the icon . Why?

► There are two possible causes if you see the icon :

- 1) The USB phone fails to communicate with your PC. Please check whether the USB port is in a normal state.
- 2) The USB phone fails to work normally in Windows. You may need to reinstall the device

driver. Please follow the steps below:

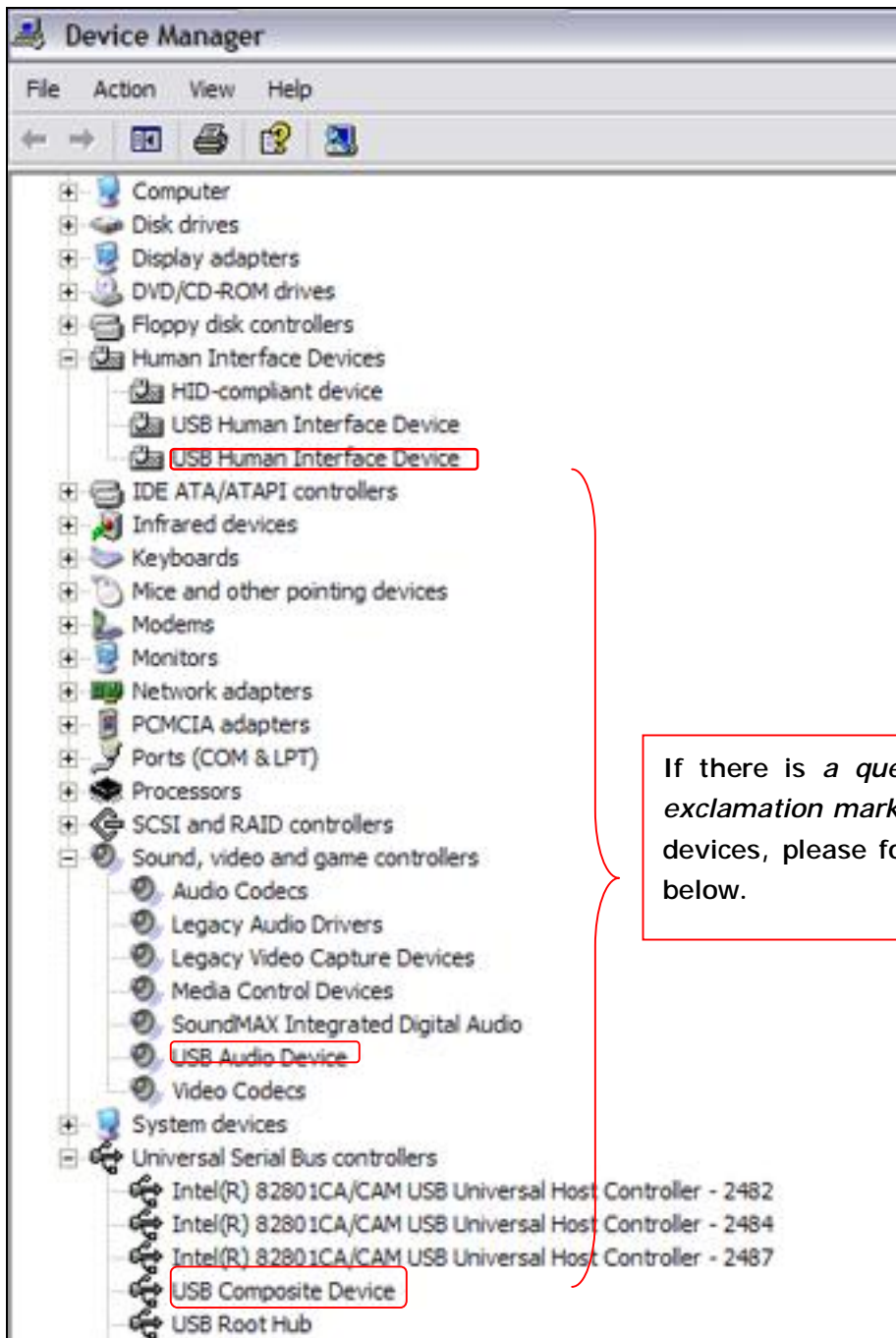
“Start”—“Setting”—“Control Panel”—“System”—“Hardware”—“Device Manager”

Then, you will see the following window. Please check whether these three devices below are in a normal state.

“USB Human Interface Device”,

“USB Audio Device”

“USB Composite Device”



If there is a question mark or an exclamation mark with one of these devices, please follow the guideline below.

